

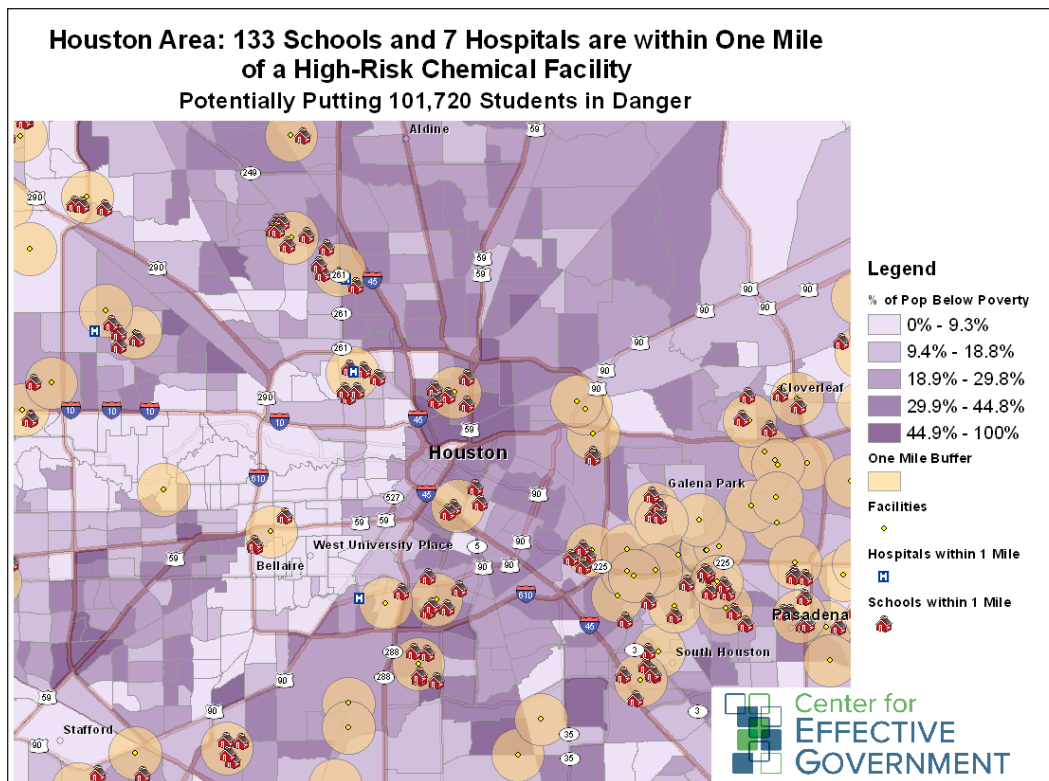
High-Risk Facilities Endanger Communities, Schools, and Hospitals in Texas

Every day, millions of people across the country live and work in the shadow of 12,440 high-risk chemical plants that store and use hazardous chemicals with the potential to kill or injure workers and community residents. These communities are more likely to be low-income communities and communities of color, who already experience disproportionate health impacts linked to chemical exposures.

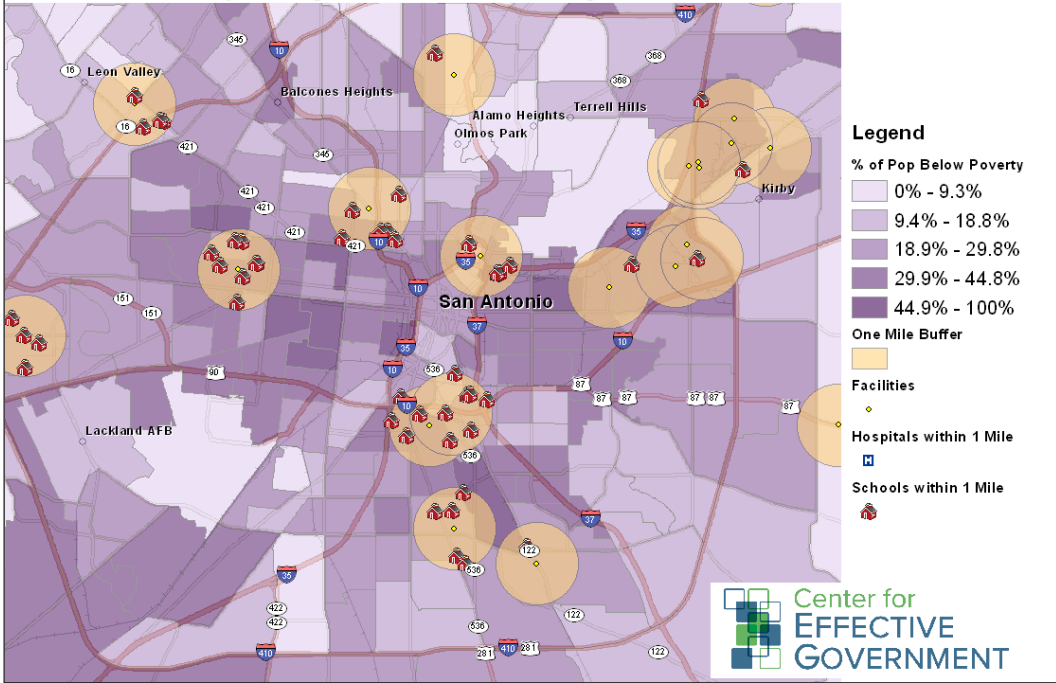
The West Fertilizer explosion in West, TX in April demonstrated the very real risk these facilities pose, especially to schools and hospitals within close proximity to these facilities. School buildings were badly damaged by the blast in West, TX, which occurred at night, so no students were harmed.

There are 1,419 facilities in Texas that store or use large amounts of toxic or flammable chemicals, according to data from EPA's Risk Management Plans. There are 1,471 schools, potentially putting 721,742 students in danger, and 134 hospitals in Texas within one mile of at least one of these high-risk chemical facilities.

In the top three most populated cities in Texas:



San Antonio Area: 72 Schools are within One Mile of a High-Risk Chemical Facility
Potentially Putting 37,113 Students in Danger



Dallas Area: 54 Schools and 3 Hospitals are within One Mile of a High-Risk Chemical Facility
Potentially Putting 25,491 Students in Danger

